

## CERTIFICATE OF ANALYSIS

Catalog #C01326M

Page 1 of 2

**Important Note:** Centrifuge before opening to ensure complete recovery of vial contents.

**Catalog #:** C01326M **Lot #:** 3E14821

**Description:** MAb to Influenza B (NP)  
Monoclonal Antibody to Influenza B Nucleoprotein

**Specificity:** Nucleoprotein (NP) of influenza virus type B.

**Host Animal:** Mouse **Isotype:** IgG<sub>2b</sub>

**Source:** Ascites

**Immunogen:** Purified influenza virus type B strain.

**Format:** Purified, Liquid

**Purification:** > 90% pure (SDS-PAGE). Protein A chromatography

**Concentration:** 3.3 mg/mL (OD<sub>280nm</sub>, E<sub>0.1%</sub> = 1.4)

**Buffer:** Phosphate Buffered Saline, pH 7.4

**Preservative:** 0.09% Sodium Azide

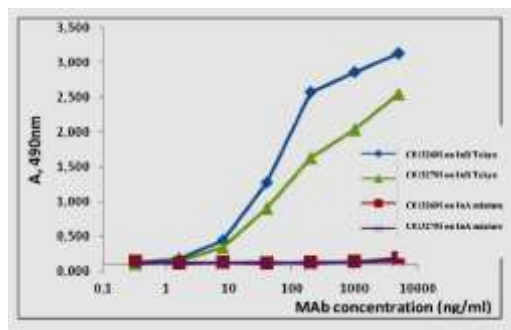
Catalog #C01326M  
Page 2 of 2

**Applications:**

Suitable for use in Western Blot and ELISA. Each laboratory should determine an optimum working titer for use in its particular application. Other applications have not been tested but use in such assays should not necessarily be excluded.

Recommended pairs for sandwich immunoassay:

| Capture | Detection |
|---------|-----------|
| C01326M | C01327M   |
| C01326M | C01329M   |



**Storage:**

Store at 2-8°C.

**Safety Note(s):**

Refer to the appropriate Safety Data Sheet (SDS) for additional information.

Quality Signature:

*Bianca Gale*

01 JUN 2021

**FOR RESEARCH OR FURTHER MANUFACTURING USE ONLY**