

## CERTIFICATE OF ANALYSIS

Catalog #C01327M

Page 1 of 2

**Important Note:** Centrifuge before opening to ensure complete recovery of vial contents.

**Catalog #:** C01327M **Lot #:** 3L33720

**Description:** MAb to Influenza B (NP)  
Monoclonal Antibody to Influenza B Nucleoprotein

**Specificity:** Nucleoprotein (NP) of Influenza virus type B.

**Host Animal:** Mouse. Hybridization of Sp2/0 myeloma cells with spleen cells from BALB/c mice. **Isotype:** IgG<sub>1</sub>

**Source:** Ascites

**Immunogen:** Purified Influenza virus type B.

**Format:** Purified, Liquid

**Purification:** > 90% pure (SDS-PAGE). Protein A Chromatography

**Concentration:** 4.1 mg/mL (OD<sub>280nm</sub>, E<sup>0.1%</sup> = 1.4)

**Buffer:** Phosphate Buffered Saline, pH 7.4

**Preservative:** 0.09% Sodium Azide

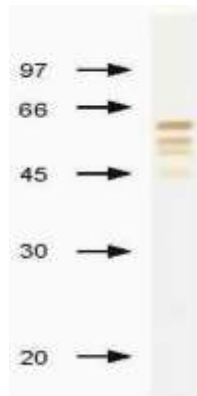
**Applications:** Suitable for use in ELISA and Western Blot. Each laboratory should determine an optimum working titer for use in its particular application. Other applications have not been tested but use in such assays should not necessarily be excluded.

Recommended pair for sandwich immunoassay:

<u>Capture</u>	<u>Detection</u>
C01326M	C01327M

Catalog #C01327M

Page 2 of 2



NP of Influenza B virus Immunodetection using anti-NP monoclonal antibody in Western Blotting after PAGE in reducing conditions. Anti-mouse IgG conjugated with HRP was used for MAb NP complex visualization.

Antibody: C01327M (5 µg/mL)

Antigen: Influenza B/Tokio/53/99 (1 µg/Lane)

**Storage:** Store at 2-8°C.

**Safety Notes (s):** Refer to the appropriate Safety Data Sheet (SDS) for additional information.

Quality Signature:

03 DEC 2020

**FOR RESEARCH OR FURTHER MANUFACTURING USE ONLY**