

CERTIFICATE OF ANALYSIS

Important Note: Centrifuge before opening to ensure complete recovery of vial contents.

Catalog #: C66700M **Lot #:** 4E12511

Description: MAb to *Campylobacter jejuni*
Monoclonal Antibody to *Campylobacter jejuni*

Specificity: Specific to *Campylobacter jejuni* in ELISA. Does not crossreact with *H. pylori*, *Salmonella typhimurium*, *Shigella sonnei*, *Pseudomonas aeruginosa*, *Yersinia* and *Citrobacter*.

Host Animal: Mouse **Isotype:** IgG_{2b}

Source: Ascites

Immunogen: *Campylobacter jejuni* ATCC 29428

Format: Purified, Liquid

Purification: > 90% pure (SDS-PAGE). Protein A Chromatography

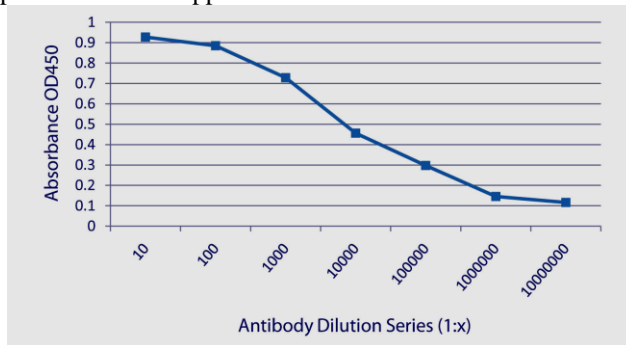
Concentration: 4.04 mg/mL (OD_{280nm}, E^{0.1%} = 1.4)

Affinity Constant: Not Determined

Buffer: Phosphate Buffered Saline, pH 7.4

Preservative: 0.05% Sodium Azide

Applications: Suitable for use in ELISA. Each laboratory should determine an optimum working titer for use in its particular application. Other applications have not been tested but use in such assays should not necessarily be excluded.



Titration curve of C66700M in indirect ELISA:

Antigen: *Campylobacter jejuni* ATCC #29428, coated at approx. 10⁶ bacteria per well.

Antibody: Dilution series of C66700M, incubated 1 hour at room temperature followed by Goat anti-Mouse IgG: HRP conjugate and TMB substrate.

Storage: Short term (up to 7 days) store at 2-8°C. Long term, aliquot and store at -20°C. Avoid multiple freeze/thaw cycles.

Safety Note(s): Refer to the appropriate Safety Data Sheet (SDS) for additional information.



Signature

02 Jan 2017

Date

FOR RESEARCH OR FURTHER MANUFACTURING USE ONLY