



Meridian
Life Science, Inc.
Innovative Solutions. Trusted Partner.®

5171 Wilfong Road
Memphis, TN 38134
USA
Telephone: 901-382-8716
Fax: 901-333-8223
Email: info@meridianlifescience.com
www.MeridianLifeScience.com

CERTIFICATE OF ANALYSIS

Important Note: Centrifuge before opening to ensure complete recovery of vial contents.

Page 1 of 2

Catalog #: K67112M **Lot #:** 5H22619

Description: MAb to EGFR, pTyr 1045
Monoclonal Antibody to Human Epidermal Growth Factor Receptor (EGFR), phosphorylated at Tyrosine 1045.

Specificity: Recognizes EGFR phosphorylated at Tyrosine 1045. Epitope: Phosphotyrosine pY1045 L Q R pY S S D.
Reacts with Human and mouse.

Host Animal: Mouse **Isotype:** IgG₁

Source: Cell Culture

Immunogen: Phosphopeptide conjugated to KLH.

Format: Purified, Liquid

Purification: Thiophilic adsorption and size exclusion chromatography.

Concentration: 0.1 mg/mL

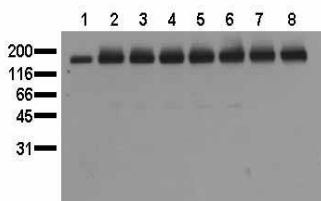
Buffer: Phosphate Buffered Saline, PEG, Sucrose containing 50% Glycerol.

Preservative: 0.09% Sodium Azide

Catalog #K67112M
Page 2 of 2

Applications:

Immunoblotting: 0.5 µg/mL for HRP/ECL detection.
Recommended Blocking Buffer CPPT: 0.5% (w/v) casein, 1% (w/v) PEG 4000, 1% (w/v) Polyvinylpyrrolidone (PVP), 0.1% Tween 20, 10 mM Tris/HCl, pH 7.4, 150 mM Sodium Chloride.



EGFR Activation

Serum starved MDA-MB 468 cells were incubated with 10 ng/mL EGF for the indicated times. Whole cell lysates were prepared and separated by SDS-PAGE (20,000 cells/lane). The blot was probed with 0.5 µg/mL K67112M for 1 hour at RT and developed by ECL (exp. time: 30 sec).

Lane 1: Control
Lane 2: 5 min EGF
Lane 3: 15 min EGF
Lane 4: 30 min EGF

Lane 5: 1 hour EGF
Lane 6: 2 hour EGF
Lane 7: 4 hour EGF
Lane 8: 8 hour EGF

Immunoprecipitation: Use at 1-10 µg per 10⁶ pervanadate-treated A431 cells.

ELISA: 0.05 µg/mL

Each laboratory should determine an optimum working titer for use in its particular application. Other applications have not been tested but use in such assays should not necessarily be excluded.

Storage:

Upon receipt, aliquot and store (up to 1 year) at -20°C. Avoid multiple freeze/thaw cycles.

Safety Notes (s):

Refer to the appropriate Safety Data Sheet (SDS) for additional information.

Includes Positive Control:

Description:

Cell lysate of pervanadate treated HepG2 cells.

Format:

Lysate, Lyophilized

Reconstitute with 200 µL water. After complete solubilization of the proteins, add 200 µL SDS-PAGE sample buffer and incubate at 90°C for 5 minutes.

Applications:

For Western Blot applications: 20 µL/lane (mini gel) for HRPO/ECL detection. 20µL is approximately 20,000 to 80,000 cells. Note: Lyophilized cell lysate contains SDS and is not recommended for applications with native proteins such as Immunoprecipitation.

Storage:

Store lyophilized product at -20°C. After reconstitution, aliquot and store at -20°C. Avoid multiple freeze/thaw cycles.

Brenda Dunn

27AUG2019

FOR RESEARCH OR FURTHER MANUFACTURING USE ONLY