



Meridian
Life Science, Inc.
Innovative Solutions. Trusted Partner.®

5171 Wilfong Road
Memphis, TN 38134
USA
Telephone: 901-382-8716
Fax: 901-333-8223
Email: info@meridianlifescience.com
www.MeridianLifeScience.com

CERTIFICATE OF ANALYSIS

Important Note: Centrifuge before opening to ensure complete recovery of vial contents.

Catalog #: M66112M **Lot #:** 9B04512

Description: MAb to CRP
Monoclonal Antibody to Human C Reactive Protein (CRP)

Specificity: Human CRP. Recognizes antigen both in the presence and in the absence (samples containing EDTA) of Ca^{2+} .

Host Animal: Mouse **Isotype:** IgG₁

Source: Ascites

Immunogen: Purified Human CRP

Format: Purified, Liquid **Exp. Date:** 11 JUN 2020

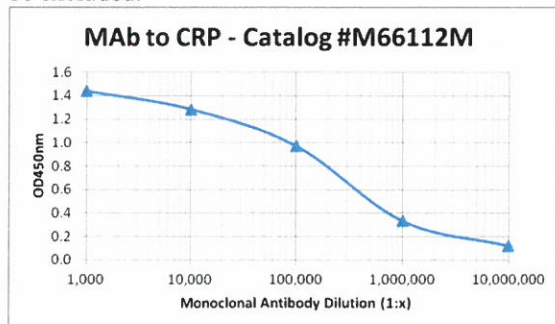
Purification: > 90% pure (SDS-PAGE). Protein A Chromatography
Product is 0.2 μm filtered.

Concentration: 4.79 mg/mL (OD280nm, $E^{0.1\%} = 1.4$)

Buffer: 10 mM Sodium Phosphate, 150 mM Sodium Chloride, pH 7.4 \pm 0.2.

Preservative: 0.05% Sodium Azide

Applications: Suitable for use in ELISA. Each laboratory should determine an optimum working titer for use in its particular application. Other applications have not been tested but use in such assays should not necessarily be excluded.



Titration curve of M66112M in indirect ELISA

Antigen: Human CRP antigen, coated at 0.1 $\mu\text{g}/\text{mL}$.

Antibody: Dilution series of M66112M, incubated 2 hours at room temp followed by Goat anti-Mouse IgG:HRP conjugate and TMB substrate.

Storage: Short term (up to 7 days) store at 2-8°C. Long term, aliquot and store at -20°C. Avoid multiple freeze/thaw cycles.

Safety Note(s): See appropriate Safety Data Sheet (SDS) for additional information.

Signature

11 June 2018

Date

FOR RESEARCH OR FURTHER MANUFACTURING USE ONLY