

## CERTIFICATE OF ANALYSIS

**Important Note:** Centrifuge before opening to ensure complete recovery of vial contents.

**Catalog #:** R01636

**Lot #:** 4A01922

**Description:** Zika Virus NS1 Recombinant  
Zika Virus Non-Structural Protein 1 Recombinant  
Product contains Histidine tag.  
Reacts with both IgG and IgM.  
The NS-1 is a large, highly conserved protein.

**Source:** Insect Cells

**Format:** Purified, Liquid

**Purification:** > 85% Pure (SDS PAGE). Affinity Chromatography

**Concentration:** 3.6 mg/mL (Bradford Method)

**Buffer:** Phosphate Buffered Saline, pH 7.4

**Preservative:** 0.09% Sodium Azide

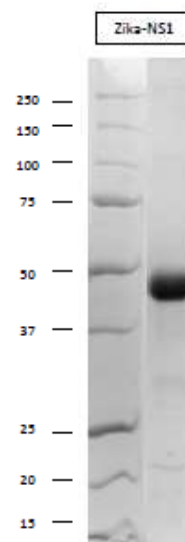
**Applications:** Suitable for use in ELISA, CLIA and Lateral Flow Assays. To overcome flavivirus cross-reactivity in diagnostics, recombinant antigens to envelope and NS1 antigens are commonly used. IgG and IgM antibodies typically show a high sensitivity and specificity to these epitopes especially NS1 which is thought to contain more species-specific epitopes than the envelope proteins. Each laboratory should determine an optimum working titer for use in its particular application. Other applications have not been tested but use in such assays should not necessarily be excluded.

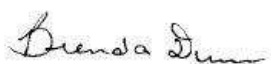
**Storage:** Store at -20°C, avoid repeated freeze/thaw cycles.

**Thawing:** Thaw at room temperature or 4°C. Cryo-concentration may occur on thawing which should not affect performance characteristics. If cryo-concentration is seen after the material is completely thawed, mix by inverting the container **GENTLY** several times before use.

**Inactivation:** Not Applicable

**Safety Note(s):** Refer to the appropriate Safety Data Sheet (SDS) for additional information.



Quality Signature: 

20JAN2022

**FOR RESEARCH OR FURTHER MANUFACTURING USE ONLY**